

Gas Spring Accessories

End Fittings

The range of Camloc gas springs is complimented by specially designed end fittings. Together, the extensive array creates a wide range of easy-to-assemble fixing options to suit your application.

The end fittings are manufactured in a variety of materials including carbon steel, stainless steel, zinc and nylon to match the application needs.

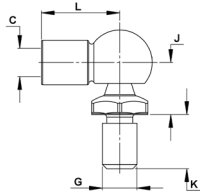
End fittings can be either the same or you can choose different sizes and types for each end. However, we would always recommend mounting gas springs on your application using a ball joint at one end to

Benefits

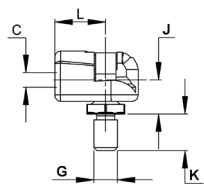
- Easy installation
- Maintenance free
- A wide range of flexible mounting options
- Salt spray tested under ASTM B117
- BS EN ISO 9001 Registered Company



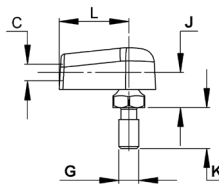
BALL JOINT (TYPE B / G)



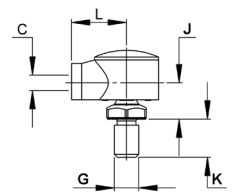
BALL JOINT (TYPE P & PF)



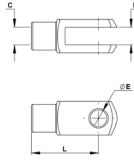
BALL JOINT (TYPE PE)



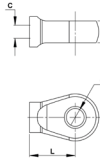
BALL JOINT (TYPE PV)



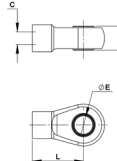
CLEVIS FORK (TYPE C / H)



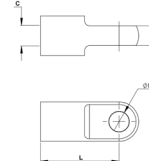
EYE (TYPE E / Z)



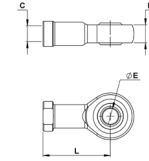
EYE (TYPE E1 / E9)



FLAT EYE (TYPE F / J)



ROSE JOINT (TYPE D)



END FITTINGS (All dimensions shown in mm are nominal)

Part No.	Part Code	Spring Size	End Fitting Type	Material	Suitable for Stainless Steel	Dim.						
						C	E	G	J	K	L	M
06-2827	P2	6-15	Ball Joint	Nylon	-	-	-	M5x0.8	14	9	17.5	-
06-4259	P3		Ball Joint	Nylon	-	-	-	M8x1.25	12	12.5	17.5	-
06-0032	P7		Ball Cup	Nylon	Y	-	-	-	-	-	17.5	-
06-4257	P9		Ball Cup	Nylon	-	-	-	-	-	-	17.5	-
06-4340	PE		Ball Joint	Nylon	Y	-	-	M5x0.8	9	10.3	17.5	-
06-4593	PF		Ball Joint	Nylon	-	-	-	M6x1.0	12	12.5	17.5	-
06-0033	C1		Clevis Fork *	Steel	-	-	5	-	-	-	20	5
06-1890	F1		Flat Eye	Steel	-	-	6.1	-	-	-	22	3
06-1018	E1		Eye	Nylon	-	-	6.1	-	-	-	17	8
06-4881	EA		Eye	Nylon	Y	-	6.1	-	-	-	17	8
08-2826	B1	8-18	Ball Joint	Steel	-	-	-	M5x0.8	14	9	18	-
08-2588	B2		Ball Joint	Steel	-	-	-	M8x1.25	12	12.5	18	-
08-2813	B3		Ball Joint	Steel	-	-	-	5/16" UNC	12	12.5	18	-
08-4616	B7		Ball Joint	Steel	-	-	-	M6x1.0	12	12.5	18	-
08-2819	B8		Ball Cup	Steel	-	-	-	-	-	-	18	-
08-4260	P5		Ball Joint	Nylon	-	-	-	M8x1.25	12	12.5	17.5	-
08-4256	P8		Ball Cup	Nylon	-	-	-	-	-	-	17.5	-
08-4255	PV		Ball Joint	Nylon	Y	-	-	M8x1.25	12	12.5	18	-
08-4331	G1		Ball Joint	Stainless Steel	Y	-	-	M8x1.25	12	12.5	18	-
08-4443	G2		Ball Cup	Stainless Steel	Y	-	-	-	-	-	18	-
08-0035	C2	Clevis Fork *	Steel	-	-	6	-	-	-	24	6	
08-4337	H1	Clevis Fork	Stainless Steel	Y	-	6	-	-	-	24	6	
08-1902	F2	Flat Eye	Steel	-	-	8.1	-	-	-	25	5	
08-4334	J1	Flat Eye	Stainless Steel	Y	-	8	-	-	-	25	5	
08-0336	E3	Eye	Nylon	Y	-	8.1	-	-	-	21	10	
08-0419	E4	Eye	Nylon	Y	-	6.1	-	-	-	21	10	
08-0031	E5	Eye	Nylon	Y	-	10.1	-	-	-	21	10	
08-3940	E9	Eye	Nylon	-	-	6.1	-	-	-	17	8	
08-0653	Z2	Eye	Zinc	-	-	8.3	-	-	-	21	10	
08-0654	Z3	Eye	Zinc	-	-	10.3	-	-	-	21	10	
08-0142	Z7	Eye	Zinc	-	-	12.6	-	-	-	29	10	
10-2590	B4	10-23	Ball Joint	Steel	-	-	-	M8x1.25	13	16.5	30	-
10-2830	B9		Ball Cup	Steel	-	-	-	-	-	-	30	-
10-4333	G5		Ball Joint	Stainless Steel	Y	-	-	M8x1.25	13	16.5	30	-
10-0037	C3		Clevis Fork *	Steel	-	-	8	-	-	-	32	8
10-4338	H2		Clevis Fork	Stainless Steel	Y	-	8	-	-	-	32	8
10-1886	F4		Flat Eye	Steel	-	-	8.2	-	-	-	32	8
10-4335	J2		Flat Eye	Stainless Steel	Y	-	8	-	-	-	32	8
10-0655	Z4		Eye	Zinc	-	-	8.3	-	-	-	21	10
10-0656	Z5		Eye	Zinc	-	-	10.3	-	-	-	21	10
14-0131	B6		14-28	Ball Joint	Steel	-	-	-	M10x1.5	16	20	35
14-4564	G6	Ball Joint		Stainless Steel	Y	-	-	M10x1.5	16	20	35	-
14-0132	C4	Clevis Fork *		Steel	-	-	10	-	-	-	37	10
14-4864	D6	Rose Joint		Steel	-	-	10	-	-	-	43	14
14-2459	FD	Flat Eye		Steel	-	-	10	-	-	-	32	10
14-4563	J3	Flat Eye		Stainless Steel	Y	-	10	-	-	-	32	10.1
14-4710	J4	Flat Eye		Stainless Steel	Y	-	8	-	-	-	32	8

*Version with clip also available