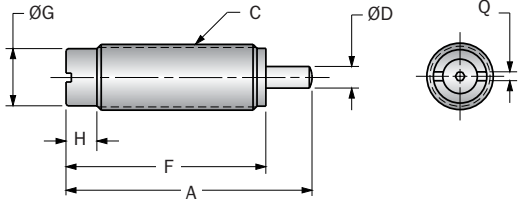


# Non-Adjustable Hydraulic Series

## TK and STH Series

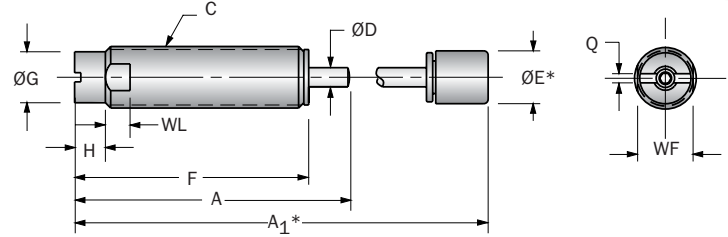


### TK 21M



\*Note: A<sub>1</sub> and E applies to button model and urethane striker cap accessory.

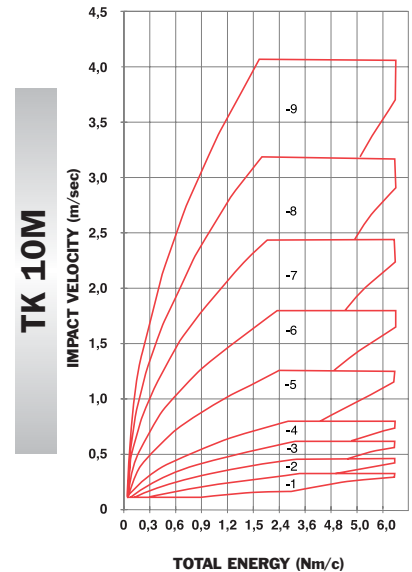
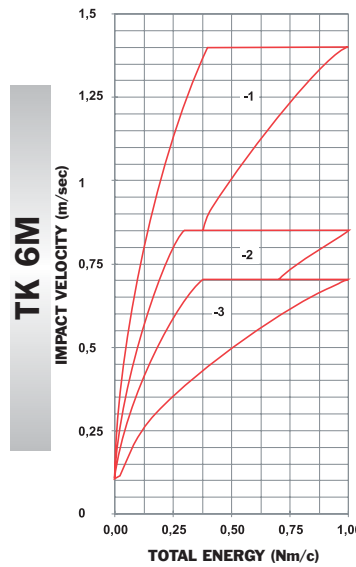
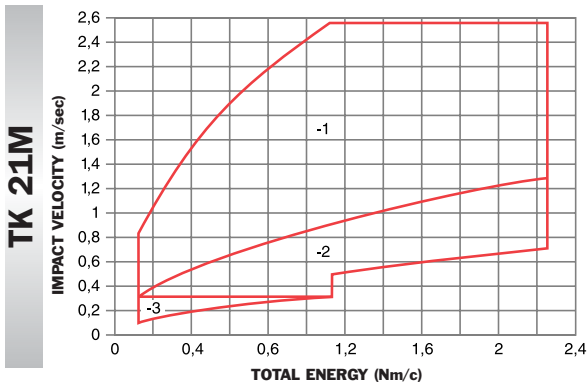
### TK 6M/TK 10M (B)



Catalog No.		Bore Size (mm)	(S) Stroke (mm)	(E <sub>T</sub> ) Max. Nm/cycle	(E <sub>T</sub> -C) Max. Nm/hour	(F <sub>p</sub> ) Max. Shock Force (N)	Nominal Coil Spring Force		(F <sub>D</sub> ) Max. Propelling Force (N)	Model Weight (g)
(Model)	Damping Constant						Extended (N)	Compressed (N)		
TK 6M	-1, -2, -3	4,2	4,0	1,0	3 600	360	1,0	3,5	-	4
TK 21M	-1, -2, -3	7,1	6,4	2,2	4 100	700	2,9	5,0	89	12
TK 10M (B)	-1 to -9	7,0	6,4	6,0	13 000	1 400	1,5	10,0	-	17

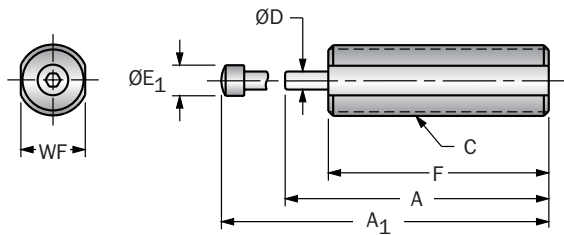
Catalog No. (Model)	A	A <sub>1</sub>	C	D	ØE	F	G	H	Q	WF	WL	Stroke (S) (mm)	Stroke Constant
TK 6M	29,0	-	M6 x 0,5	2,0	4,0	25,0	5,0	4,0	1,0	-	-	4,0	-1, -2, -3
TK 21M	35,4	-	M10 x 1,0	3,2	-	28,7	8,2	4,4	1,2	-	-	6,4	-1, -2, -3
TK 10M (B)	44,6	54,4	M10 x 1,0	3,1	8,5	38,0	8,3	5,0	1,5	-	-	6,4	-1 to -9

Note: 1. A positive stop is required to prevent the bottoming of the TK 21 shock absorber. All dimensions in millimeters.



NON-ADJUSTABLES

### STH .25M → STH 1.5M x 2



Catalog No. (Model)	Bore Size (mm)	(S) Stroke (mm)	(E <sub>T</sub> ) Max. Nm/cycle	(E <sub>T</sub> -C) Max. Nm/hour	(F <sub>p</sub> ) Max. Shock Force (N)	Nominal Coil Spring Force		Model Weight (g)	A	A <sub>1</sub>	C	D	E	F	WF
						Extended (N)	Compressed (N)								
STH .25M	11,2	6,0	11	4 420	2 730	11	18	79	-	71,0	M14 x 1,0	4,8	12,7	51,0	13,0
STH .5M	14,5	12,5	65	44 200	8 000	18	31	218	-	89,0	M22 x 1,5	5,6	9,5	68,5	20,0
STH .75M	19,5	19,0	245	88 400	19 600	35	89	500	-	130,0	M30 x 2,0	8,0	14,3	103,0	27,0
STH 1.0M	25,4	25,0	500	147 000	29 800	98	235	726	-	170,0	M36 x 1,5	9,5	17,5	136,5	32,0
STH 1.0M x 2	25,4	50,0	1 000	235 000	29 800	66	133	862	-	238,2	M36 x 1,5	9,5	17,5	178,3	32,0
STH 1.5M	35,0	25,0	1 150	250 000	65 000	90	228	1 400	180,0	-	M45 x 1,5	16,0	-	154,0	42,0
STH 1.5M x 2	35,0	50,0	2 300	360 000	65 000	56	226	1 800	270,0	-	M45 x 1,5	16,0	-	219,0	42,0

Notes: 1. Custom orificed application data needed.

2. All shock absorbers will function at 5% of their rated energy per cycle. If less than 5%, a smaller model should be specified.

All dimensions in millimeters.